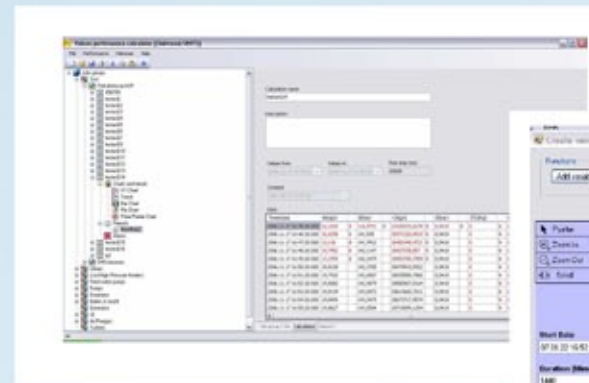
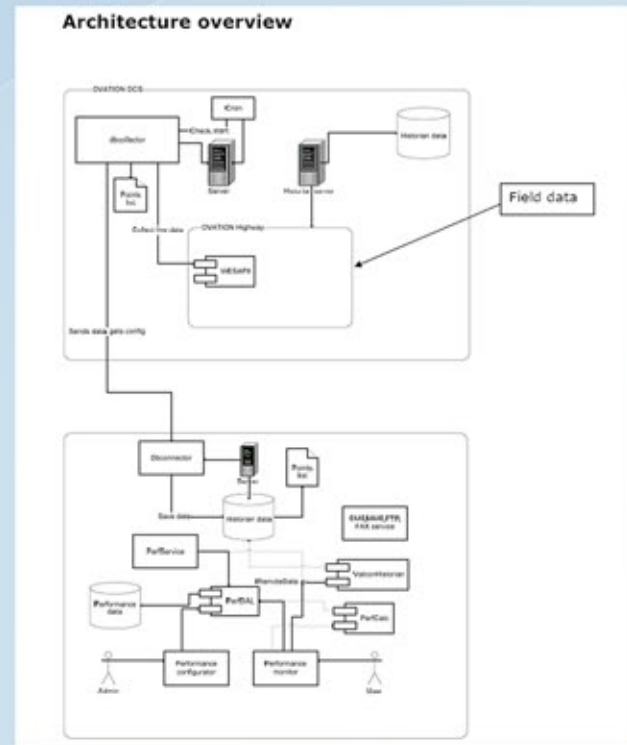


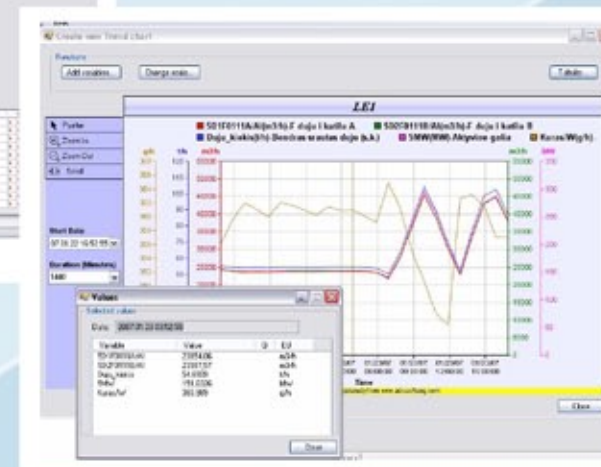
## We present you Valcon Performance Monitor!

Easy...  
When you know. How.

Valcon Performance Monitor is a software package that integrates functionality for process data collection, performance calculation and results processing. Valcon Performance Monitor is a very flexible and easy to use software with the common user interface. The User can calculate selected process part performance in every past time interval with varied precision or use real time performance calculations. Every calculation created for the performance calculation can be very flexibly changed or expanded to satisfactory user needs.

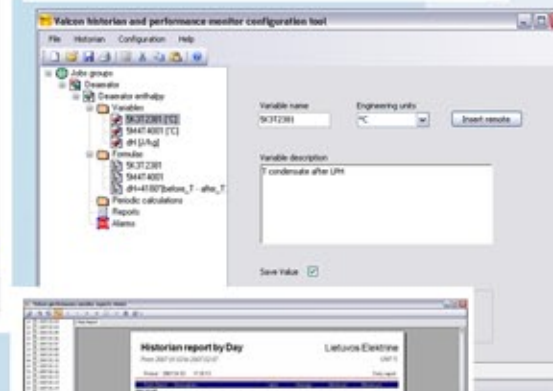


Make trends



See data

A screenshot of the software interface showing a 'Tabular trend' table. The table has columns for 'TimeStamp', 'Value', and 'Unit'. It displays a list of data points over time.



Print reports

For analyzing calculated performance results the user can select various types of charts or use reports. Report templates can be changed very easily and quickly by the user. The Calculation results can be exported to the popular application types (Excel, PDF and etc.) or sent to a printer. The Chart has a drag to zoom and a drag to scroll features, real-time, view port, tool tips and mouse events support. The Calculation results are stored in the SQL server database and can be reused any time. Components used for calculating steam and water parameters are certificated by software (GOST).

### Hardware requirements

- Processor: Intel Core 2 Quad 2.4Ghz or Xeon Quad 2x4Mb L2;
- Memory: 4Gb DDR2/DDR3 800Mhz;
- HDD: RAID 5 (3 disk's) = SATA or SAS;
- Network: 1Gbit/s.

### Software requirements

- Microsoft Windows XP SP2 (or later)
- Microsoft .NET 2.0 (Included)
- Microsoft SQL Server 2005 Express edition (Included)
- Crystal reports viewer (Included)
- ASE ChartDirector component (Included)
- WaterSteam Pro 6 component (Included)
- Crystal reports designer (Not included)